



MEDICAL

SPRING '22 PRODUCT GUIDE

WE'VE RAISED OUR STANDARDS

New and improved European Wash Standards mean ultra-efficient laundering and an extra-polished appearance.



MEDICAL

DEFINING DURABILITY SINCE 1922

For nearly a century Dickies has epitomized the strength and spirit of the American worker, making best-in-class quality and customer satisfaction their top priorities.

Dickies Medical continues to deliver first-rate functionality, with classic scrubs and comfort-tech features designed for style-minded healthcare professionals. Alongside apparel sold in retail and online channels, a new collection has been developed specifically for the industrial laundry market, made from an exclusive fabric that can withstand rigorous laundering protocols, while offering maximum comfort, stretch, and fit.



DKE615
V-Neck Top
in Pewter
(PWPS)



TABLE OF CONTENTS

- 5 BALANCE
- 9 EDS ESSENTIALS
- 13 EDS SIGNATURE
- 18 FIT GUIDE
- 19 SIZE CHARTS
- 20 INDEX & COLOUR ABBREVIATIONS



cover:
DKE870
V-Neck Top with
Rib-Knit Panels
in Royal
(ROY)

top:
DKE845
V-Neck Top
in Royall
(ROY)

center:
DKE625
Mock Wrap Top
in Caribbean
Blue
(CAPS)

bottom:
DKE86706
V-Neck Top
in Wine
(WIWZ)

BALANCE

STYLE HIGHLIGHTS



2-WAY STRETCH



SIGNATURE STYLING



DRAPES PERFECTLY



DKE870
V-Neck Top
With Rib-Knit Panels
in Royal
(ROY)

FUNCTION AND STYLE IN EQUAL BALANCE.

A go-to collection that checks all the boxes, Dickies Balance delivers on-trend details, a flattering and comfortable fit, and in-demand performance features. In popular core colours and an extensive size range for women and men, this collection helps individuals and groups find the perfect balance.

WOMEN'S

DKE870
V-Neck Top
With Rib-Knit Panels



Sizes:
XXS-3XL (68.5cm)

- Contemporary fit
- Two patch pockets
- Rib-knit neckband and back panels
- Bungee ID badge loop
- Shirrtail hem
- Tonal label

Fabric:
77 Poly/20 Rayon/3 Elastane Twill

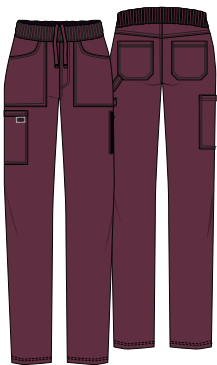
Care:



Available Colours:

Black BLK	Ciel Blue CIE	Navy NAV
Pewter PWT	Wine WIN	Royal ROY
White WHT		

DKE135
Mid Rise Pull-on Trouser



Sizes:
XXS-3XL (76cm)

- Contemporary fit
- Rib-knit covered elastic with inside drawstring
- Six pockets: two front patch pockets, cargo pocket, hidden zipper pocket, two back patch pockets
- Mock fly
- Utility loop
- Tonal label
- Straight leg, 38cm opening

Fabric:
77 Poly/20 Rayon/3 Elastane Twill

Care:



Available Colours:

Black BLK	Ciel Blue CIE	Navy NAV
Pewter PWT	Wine WIN	Royal ROY
White WHT		

DKE135
Mid Rise Pull-on
Pant in Royal
(ROY)

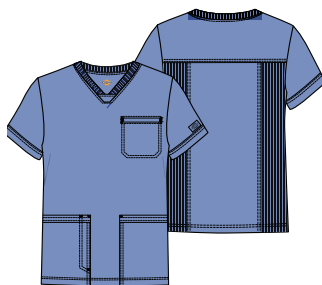


BALANCE

MEN'S

DKE845

V-Neck Top

**Sizes:**

XXS-3XL (76cm)

- Men's fit
- Three pockets: patch pockets, chest pocket
- Pen slot on right patch pocket
- Rib-knit neckband and back side panels
- Back yoke
- Tonal label

Fabric:

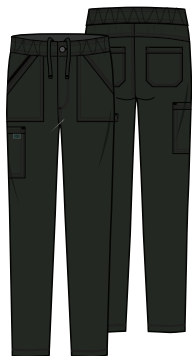
77 Poly/20 Rayon/3 Elastane Twill

Care:**Available Colours:**

Black BLK	Ciel Blue CIE	Navy NAV
Pewter PWT	Royal ROY	Wine WIN

DKE220

Mid Rise Zip Fly Trousers

**Sizes:**

XXS-3XL (80cm)

- Men's fit
- Elastic waistband with inside drawstring
- Zip fly with button closure
- Six pockets: front patch pockets, cargo pocket, back patch pockets, a hidden zipper pocket
- Tonal label
- Straight leg, 40.5cm opening

Fabric:

77 Poly/20 Rayon/3 Elastane Twill

Care:**Available Colours:**

Black BLK	Ciel Blue CIE	Navy NAV
Pewter PWT	Royal ROY	Wine WIN

DKE845V-Neck Top
in Black
(BLK)**DKE220**Mid Rise Zip Fly Trousers
in Black
(BLK)

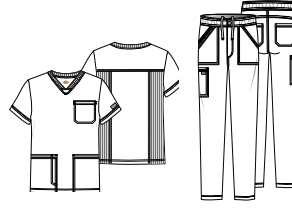
**BALANCE
COLOR AND
STYLE MATRIX**

All styles and colors featured are reorderable. Styles are made from Poly/Rayon/Elastane Twill, unless noted. Center back lengths and inseams are noted in parentheses.

WOMEN



MEN'S



DKE870

V-Neck Top
With Rib-Knit
Panels
XXS-3XL
(68.5cm)

DKE135

Mid Rise
Pull-on Trousers
XXS-3XL
(76cm)

DKE845

V-Neck Top
XXS-3XL
(76cm)

DKE220

Mid Rise
Zip Fly Trousers
XXS-3XL
(80cm)

Black
Navy
Pewter
Ciel Blue
Royal
Wine
White

BLK				
NAV				
PWT				
CIE				
ROY				
WIN				
WHT			style not available in this color	style not available in this color





STYLE HIGHLIGHTS



4-WAY STRETCH



STRONG & DURABLE



EASY CARE



DK615
V-Neck Top
in Pewter
(PWPS)

ESSENTIAL WORKWEAR FOR ESSENTIAL WORKERS.

EDS Essentials continues to offer performance, value, durability, and style that works overtime. Made from a comfortable four-way stretch, moisture-wicking poly/elastane in an ever-expanding selection of colours and styles, it's workwear that works all day long.

WOMEN'S

DKE015 V-Neck Top



Sizes:
XXS-3XL (66cm)

- Contemporary fit
- Twill tape at neckline
- Two patch pockets
- Pen slot with utility twill tape
- Instrument loops inside left pocket
- Shoulder yokes
- Instrument loops with snap at right shoulder
- Back princess lines
- Signature tonal woven label
- Signature logo twill tape at the back neck
- Side vents

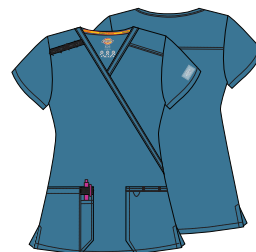
Fabric:
95 Poly/5 Elastane Poplin

Care:

Available Colours:



DKE625 Mock Wrap Top



Sizes:
XXS-3XL (66cm)

- Contemporary fit
- Shoulder yokes
- Instrument loops at right shoulder
- Two patch pockets
- Pen slot with utility twill tape
- Instrument loops and bungee loop at left pocket
- Signature tonal woven label
- Signature logo twill tape inside back neck
- Side vents

Fabric:
95 Poly/5 Elastane Poplin

Care:

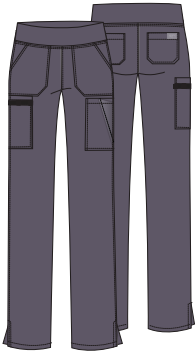
Available Colours:



DKE015
V-Neck Top
in Pewter
(PWPS)

WOMEN'S (CONT.)

DKE005
Natural Rise
Pull-on Cargo Trouser



- Sizes:**
XXS-3XL (76cm)
- Contemporary fit
 - Rib-knit covered elastic waistband
 - Seven pockets: two front patch pockets, two cargo pockets, accessory pocket, two back patch pockets
 - Utility twill tape instrument loops on right cargo pocket
 - Side vents
 - Tapered leg, 38cm opening

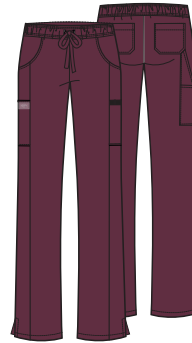
Fabric:
95 Poly/5 Elastane Poplin

Care:
60°

Available Colours:

Navy NYPS	Pewter PWPS
--------------	----------------

DKE010
Mid Rise Drawstring Trouser



- Sizes:**
XXS-3XL (80cm)
- Contemporary fit
 - Elastic waistband with drawstring
 - Seven pockets: two front pockets, two cargo pockets, accessory pocket, and two back pockets
 - Side vents
 - Straight leg, 43cm opening

Fabric:
95 Poly/5 Elastane Poplin

Care:
60°

Available Colours:

Black BAPS	Caribbean Blue CAPS	Navy NYPS
Pewter PWPS	Wine WNPS	White WTPS [†]

[†]95 Polyester/5 Spandex Heathered Poplin

MEN'S

DKE645
V-Neck Top



- Sizes:**
XXS-3XL (73.5cm)
- Men's fit
 - Four pockets: patch pockets, chest pocket with pen slot, accessory pocket
 - Utility twill tape instrument loops on right pocket
 - Signature tonal woven label
 - Signature logo twill tape inside back neck
 - Side vents

Fabric:
95 Poly/5 Elastane Poplin

Care:
60°

Available Colours:

Black BAPS	Caribbean Blue CAPS	Ciel CIPS
Galaxy Blue GAB	Navy NYPS	Pewter PWPS
Royal RYPS	Wine WNPS	White WTPS [†]

[†]95 Polyester/5 Elastane Heathered Poplin

DKE015
Natural Rise Drawstring Trouser



- Sizes:**
XXS-3XL (82cm)
- Men's fit
 - Back elastic waistband with inside drawstring
 - Zip fly with button closure
 - Five belt loops
 - Six pockets: two front patch pockets, two cargo pockets, two back pockets
 - Utility twill tape instrument loop
 - Signature tonal woven label
 - Side vents
 - Straight leg, 43cm opening

Fabric:
95 Poly/5 Elastane Poplin

Care:
60°

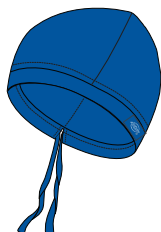
Available Colours:

Black BAPS	Caribbean Blue CAPS	Ciel CIPS
Galaxy Blue GAB	Navy NYPS [†]	Pewter PWPS [†]
Royal RYPS	Wine WNPS	White WTPS [†]

[†]95 Polyester/5 Elastane Heathered Poplin

UNISEX

DKE502
Unisex
Scrubs Hat



- Sizes:**
OS
- Unisex fit
 - Adjustable drawstring
 - Hidden terrycloth band for comfort
 - Signature tonal woven label

Fabric:
95 Poly/5 Elastane Poplin

Care:
60°

Available Colours:

Black BAPS	Caribbean Blue CAPS	Galaxy Blue GAB
Hunter Green HNPS	Navy NYPS	Pewter PWPS
Royal RYPS	Wine WNPS	

EDS ESSENTIALS
**COLOR AND
STYLE MATRIX**

All styles and colors featured are reorderable, unless otherwise noted. Styles are made from Poly/Elastane Poplin. Center back lengths and inseams are noted in parentheses.

WOMEN'S

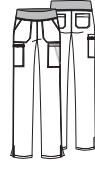


DKE615

V-Neck Top
XXS-3XL (66cm)

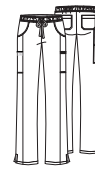
DKE625

Mock Wrap Top
XXS-3XL (66cm)



DKE005

Natural Rise
Pull-on Cargo
Trousers
XXS-3XL (76cm)



DKE010

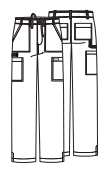
Mid Rise
Drawstring Trousers
XXS-3XL (80cm)

MEN



DKE645

V-Neck Top
XXS-53L (73.5cm)



DKE015

Natural Rise
Drawstring Trousers
XXS-3XL (82cm)

Black	BAPS
Navy	NYPS
Pewter	PWPS
Royal	RYPS
Wine	WNPS
Caribbean Blue	CAPS
Ciel	CIPS
White	WTPS
Galaxy Blue	GAB

style not available in this color	style not available in this color	style not available in this color	style not available in this color	style not available in this color	style not available in this color
style not available in this color	style not available in this color	style not available in this color	style not available in this color	style not available in this color	style not available in this color
style not available in this color	style not available in this color	style not available in this color	style not available in this color	style not available in this color	style not available in this color
style not available in this color	style not available in this color	style not available in this color	style not available in this color	style not available in this color	style not available in this color
style not available in this color	style not available in this color	style not available in this color	style not available in this color	style not available in this color	style not available in this color
style not available in this color	style not available in this color	style not available in this color	style not available in this color	style not available in this color	style not available in this color
style not available in this color	style not available in this color	style not available in this color	style not available in this color	style not available in this color	style not available in this color

UNISEX



DK502

Scrubs Hat
OS

Black BAPS
Navy NYPS
Pewter PWPS
Royal RYPS
Wine WNPS
Caribbean Blue CAPS
Hunter Green HNPS
Galaxy Blue GAB



SIGNATURE QUALITY AND STYLE



**SIGNATURE
STYLING**



**STRONG &
DURABLE**



EASY CARE

This popular collection, in sizes up to 3XL, reflects the commitment to comfort, durability, performance, and fit for which Dickies Medical is known.

DKE81006
Natural Rise Zip Fly
Pull-on Pant
in navy
(NVMZ)



WOMEN'S

DKE86706
V-Neck Top



Sizes:
XXS-3XL (68.5cm)

- Modern Classic fit
- Two patch pockets
- Red knit interior pocket (White for White)
- Logo twill tape inside back neck
- Side vents

Fabric:
Brushed 55 Cotton/45 Poly Poplin

Care:
60°

Available Colours:

Black BLWZ	Caribbean Blue CAWZ	Ciel CIWZ
Eggplant EGWZ	Hunter HUWZ	Navy NVWZ
Royal ROWZ	Teal Blue TLWZ	White WHWZ
Wine WIWZ	Pewter PTWZ	

DKE632
Mock Wrap Tunic



Sizes:
XXS-3XL (71cm)

- Contemporary Fit
- 3 Pockets: Patch Pockets
- Side vents
- Adjustable tie back

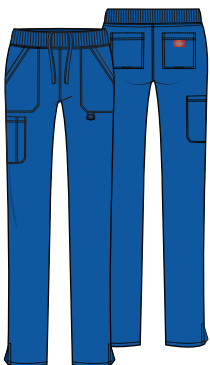
Fabric:
Brushed 55 Cotton/45 Poly Poplin

Care:
60°

Available Colours:

Black BLWZ	Ciel CIWZ	Navy NVWZ
Royal ROWZ	Wine WIWZ	Pewter PTWZ

DKE125
Mid Rise Pull-on Cargo Trouser



Sizes:
XXS-3XL (80cm)

- Contemporary fit
- Rib-knit covered elastic waistband with adjustable inside drawstring
- Five pockets: patch pockets, cargo pocket with pen slot, back pockets
- D-ring on left front patch pocket
- Side vents
- Tapered leg, 38cm opening

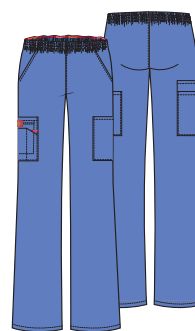
Fabric:
Brushed 55 Cotton/45 Poly Poplin

Care:
60°

Available Colours:

Black BLWZ	Ciel CIWZ	Navy NVWZ
Pewter PTWZ	Royal ROWZ	

DKE86106
Natural Rise Pull-on Cargo Trouser



Sizes:
XXS-3XL (80cm)

- Modern Classic fit
- All-around elastic waistband
- Five pockets: slash pockets, cargo pockets, Red knit interior pocket (White for White)
- Instrument loop
- Tapered leg, 42cm opening

Fabric:
Brushed 55 Cotton/45 Poly Poplin

Care:
60°

Available Colours:

Black BLWZ	Caribbean Blue CAWZ	Ciel CIWZ
Eggplant EGWZ	Hunter HUWZ	Navy NVWZ
Royal ROWZ	Teal Blue TLWZ	White WHWZ
Wine WIWZ	Pewter PTWZ	

UNISEX

DKE83706

Unisex V-Neck Top



Sizes:
XXS-3XL (71 cm)

- Unisex fit
- Chest pocket
- Bartacked pen slot
- Logo twill tape inside back neck
- Side vents

Fabric:
Brushed 55 Cotton/45 Poly Poplin

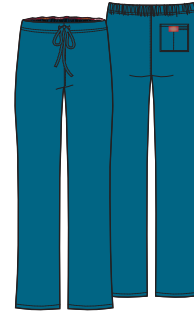
Care:
60°

Available Colours:

Black BLWZ	Caribbean Blue CAWZ	Ciel CIWZ
Eggplant EGWZ	Hunter HUWZ	Navy NVWZ
Pewter PTWZ	Teal Blue TLWZ	Royal ROWZ
White WHWZ	Wine WIWZ	

DKE83006

Natural Rise Drawstring Trouser



Sizes:
XXS-3XL (78.5cm)

- Unisex fit
- Back elastic waistband with drawstring
- Back pocket with Galaxy Blue knit interior pocket (White for White)
- Straight leg, 51.5cm opening

Fabric:
Brushed 55 Cotton/45 Poly Poplin

Care:
60°

Available Colours:

Black BLWZ	Caribbean Blue CAWZ	Ciel CIWZ
Eggplant EGWZ	Hunter HUWZ	Navy NVWZ
Pewter PTWZ	Teal Blue TLWZ	Royal ROWZ
White WHWZ	Wine WIWZ	

MEN'S

DKE81906

V-Neck Top



Sizes:
XXS-3XL (73.5cm)

- Men's fit
- Five pockets: patch pockets, double chest pocket with self-strap and D-ring, Galaxy Blue knit interior pocket (White for White)
- Shoulder and back yokes
- Center back seam
- Side vents

Fabric:
Brushed 55 Cotton/45 Poly Poplin

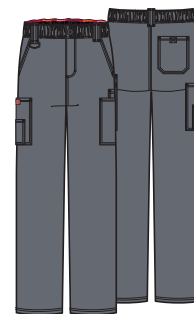
Care:
60°

Available Colours:

Black BLWZ	Caribbean Blue CAWZ	Navy NVWZ
Pewter PTWZ		

DKE81006

Natural Rise Zip Fly Pull-on Pant



Sizes:
XXS-3XL (80cm)

- Men's fit
- All-around elastic waistband with inside drawstring
- Zip fly with button closure
- Seven pockets: slash pockets, cargo pockets, back pocket with hook-and-loop closure
- Three belt loops
- D-ring at right belt loop
- Straight leg, 51.5cm opening

Fabric:
Brushed 55 Cotton/45 Poly Poplin

Care:
60°

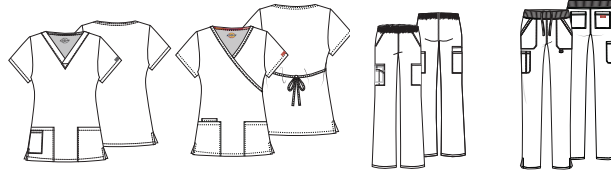
Available Colours:

Black BLWZ	Caribbean Blue CAWZ	Navy NVWZ
Pewter PTWZ		

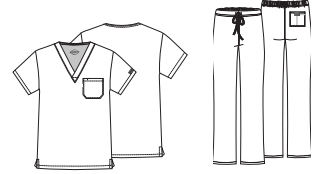
EDS SIGNATURE
**COLOR AND
STYLE MATRIX**

All styles and colors featured are reorderable, unless otherwise noted. Styles are made from Brushed Cotton/Poly Poplin. Center back lengths and inseams are noted in parentheses.

WOMEN'S



UNISEX



DKE86706

V-Neck Top
XXS-3XL (68.5cm)
Modern
Classic Fit

DKE632

Mock Wrap Tunic
XXS-3XL (71cm)
Contemporary Fit

DKE86106

Natural Rise
Pull-on
Cargo Trousers
XXS-3XL (80cm)
Modern
Classic Fit

DKE125

Mid Rise
Pull-on
Cargo Trousers
XXS-3XL (80cm)
Contemporary Fit

DKE83706

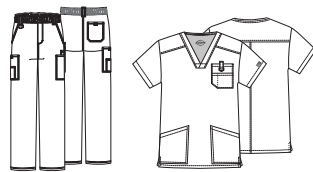
V-Neck Top
XXS-3XL (71cm)

DKE83006

Natural Rise
Drawstring Trousers
XXS-3XL (78.5cm)

Black	BLWZ					
Navy	NVWZ					
Pewter	PTWZ					
Caribbean Blue	CAWZ		style not available in this color		style not available in this color	
Wine	WVWZ				style not available in this color	
Royal	ROWZ					
Ciel	CIWZ					
White	WHWZ		style not available in this color		style not available in this color	
Eggplant	EGWZ		style not available in this color		style not available in this color	
Teal Blue	TLWZ		style not available in this color		style not available in this color	
Hunter Green	HUWZ		style not available in this color		style not available in this color	

MEN'S



DKE81006

Natural Rise
Zip Fly
Pull-on Trousers
XXS-3XL (80cm)

DKE81906

V-Neck Top
XXS-3XL (73.5cm)

Black	BLWZ		
Navy	NVWZ		
Pewter	PTWZ		
Caribbean Blue	CAWZ		



MEDICAL



DKE520C
Unisex Top and
Trousers Set
in Wine
(WIWZ)

UNISEX SCRUB SETS

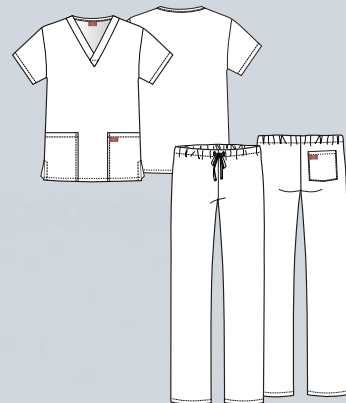
UNISEX SCRUB SETS

Same Dickies Quality
even better price.

These scrubs sets, available in 9 core colours, offer the comfort and durability you've come to expect from Dickies, at a price that's also down-to-earth. Each set features one top and one bottom, in a relaxed Unisex fit with plenty of pockets for all of your storage needs. Great for groups and medical school students.

DKE520C

Unisex Top and Trousers Set



Sizes:

XXS-3XL (72cm)

- Unisex Fit
- 3 Pockets: Patch Pockets, Pant Back Pocket
- Drawstring Waist
- Tapered Leg
- Length: 78.5cm / 72cm
- Durable
- Easy care

Fabric:

95 Poly/35 Cotton Poplin

Care:

Industrial Launder



Available Colours:

Black BLWZ	Caribbean Blue CAWZ	Ciel CIWZ
Hunter HUWZ	Navy NWWZ	Royal ROWZ
Wine WIWZ	Pewter PTWZ	White WTWZ*

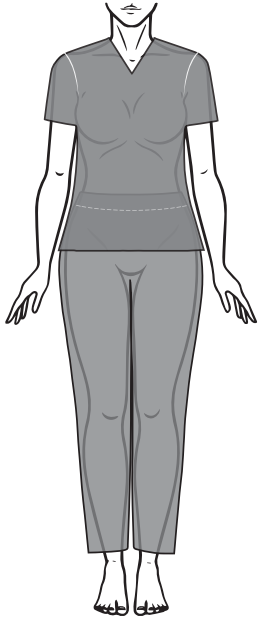
*45 Poly/55 Cotton Poplin

GARMENT FIT GUIDE

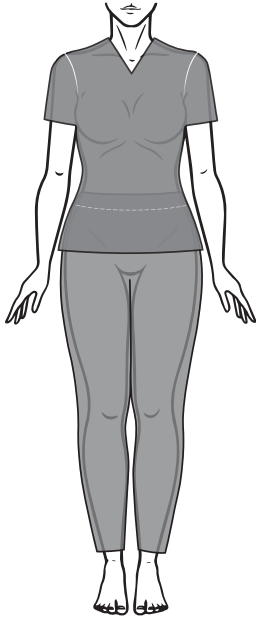
WOMEN'S

FIT GUIDE

MODERN CLASSIC FIT

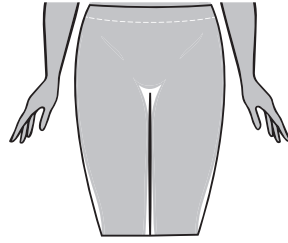


CONTEMPORARY FIT

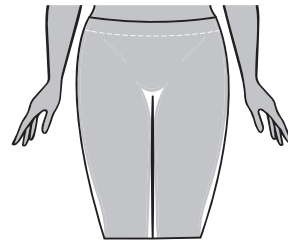


WAIST

MID RISE

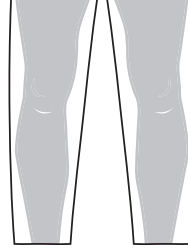


LOW RISE

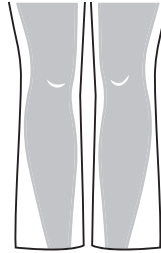


LEG FIT GUIDE

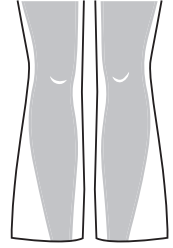
STRAIGHT



MODERN



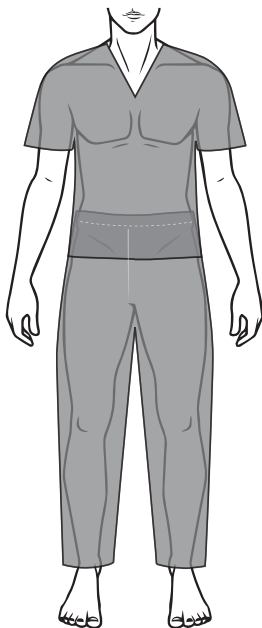
FLARE



MEN'S

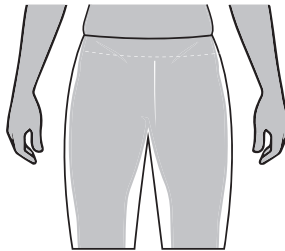
FIT GUIDE

MODERN CLASSIC FIT



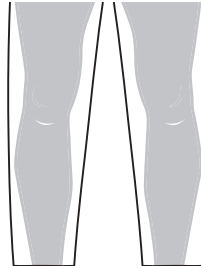
WAIST

NATURAL RISE



LEG FIT GUIDE

STRAIGHT



SIZE CHARTS

WOMEN'S MEASURING GUIDE

BUST

WAIST

HIPS

INSEAM



Measure under the arms around the fullest part of the bust/chest.

Measure under the natural waistline, loosely holding the tape measure.

Measure around the fullest part of the hips.

Measure along the inside of the leg, from just below the crotch to 1" below the ankle.

MEN'S MEASURING GUIDE

CHEST

WAIST

HIPS

INSEAM



MODERN CLASSIC/CONTEMPORARY FIT

	XXS 0	XS 2-4	S 6-8	M 10-12	L 14-16	XL 18-20	2XL 22-24	3XL 26-28
Bust	78.5-81	84-86.5	89-94	96.5-101.5	104-112	114.5-122	124.5-132	134.5-142
Waist	58.5-61	63.5-66	68.5-73.5	76-81.5	84-91.5	94-101.5	104-112	114-122
Hips	83.5-86	86.5-89	91.5-96.5	99-104	106.5-114.5	117-124.5	127-134.5	137-145
Inseam: Regular 77.5								

UNISEX FIT

	XXS 0	XS 2-4	S 6-8	M 10-12	L 14-16	XL 18-20	2XL 22-24	3XL 26-28
Chest	79-82.5	84-86.5	89-93	94-100	101.5-109	112-119.5	123-129.5	132-140
Waist	58.5-62	63.5-67	68.5-72	73.5-80	81-89	91.5-100	101.5-109	112-120.5
Hips	84-86.5	89-93	94-97	99-104	106.5-115.5	117-124.5	127-136	137-146
Inseam: Regular 79								

MEN'S FIT




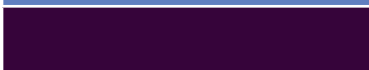








	XXS	XS	S	M	L	XL	2XL	3XL
Chest	76-81	84-89	91.5-96.5	99-104	107-114.5	117-125	127-134.5	137-145
Waist	53-58	61-66	68.5-73.5	76-81.5	84-91.5	94-101.5	104-112	114.5-122
Hips	76-81	84-89	91.5-96.5	99-104	107-114.5	117-125	127-134.5	137-145
Inseam: Regular 81								

Use the chart to determine your size. If one of your measurements is borderline between two sizes, order the smaller size for a tighter fit or the larger size for a looser fit. If your measurements for hips and waist correspond to two different suggested sizes, order the one indicated by your hip measurement. All measurements are in centimeters.

INDEX

STYLE#	PAGE(S)	STYLE#	PAGE(S)
DKE005	11	DKE632	14
DKE010	11	DKE645	11
DKE015	10, 11	DKE845	6, 7
DKE125	14	DKE870	4, 5, 6
DKE135	6	DKE81006	13, 15
DKE220	7	DKE81906	15
DKE502	11	DKE83006	15
DKE520C	17	DKE83706	15
DKE615	3, 9, 10	DKE86106	14
DKE625	4,10	DKE86706	4, 14

COLOUR ABBREVIATIONS

COLOUR NAME	COLOUR	ABBREVIATION(S)
Black		BAPS, BLK, BLWZ
Caribbean Blue		CAPS, CAWZ
Ciel		CIE, CIWZ
Eggplant		EGWZ
Galaxy Blue		GAB
Hunter Green		HUWZ
Navy		NVWZ
Pewter		PTWZ, PWPS
Royal		ROWZ, RYPS
Teal Blue		TLWZ
Wine		WIWZ, WNPS
White		WHT, WTPS



CAREISMATIC.COM

ORDERING INFORMATION

ONLINE

cbicentral.com

CUSTOMER CARE

800.283.7272

M – F, 6 am to 4 pm PST

Fax: 888.283.7271

Email: orderinquiry@careismatic.com

(Subject line: Order)

RETURN POLICY

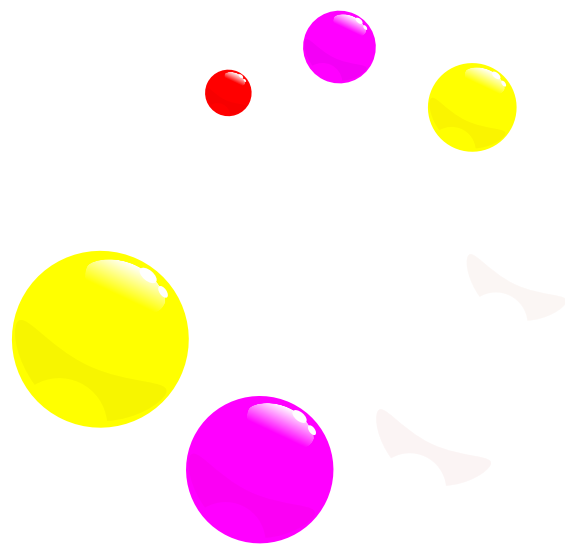
Careismatic Brands (formerly Strategic Partners, Inc.) is fully committed to providing quality products and service. Products with quality issues may be returned within one year of the invoice date. The following guidelines will help expedite the process and will ensure that the proper credit is applied to your account.

Return Policy Guidelines:

- A Return Authorization (RA) Number is required for returned merchandise.
- Contact Customer Care at 800.283.7272 for an RA Number, which will be issued by email or fax.
- Be prepared to provide the corresponding invoice number for the merchandise being returned.
- We will not accept or give credit for returns of unauthorized merchandise.
- We reserve the right to deny credit for damaged garments due to misuse, abuse, alteration or excessive wear.

Transshipping:

- Transshipping (shipping, drop-shipping or forwarding merchandise for resale to any location) requires written consent.



Careismatic Brands, Inc. (CBI) is a leading global

designer, manufacturer and distributor of high-quality,

functional and fashion-forward uniforms.

From Corporate Uniforms, Slip Resistant Footwear,

Personal Protection Equipment programs

to Medical Apparel, Adaptive Clothing, School

Uniforms, Well-being and Skincare products.

CBI delivers innovative, best-in-class products

and solutions to millions of consumers worldwide.

We operate with purpose, integrity and consistently

deliver unparalleled service to our partners.



MEDICAL

Careismatic Brands
9800 De Soto Ave., Chatsworth, CA 91311
Customer Care: 800.283.7272
M – F, 6 am to 4 pm PST
Fax: 888.283.7271
Email: orderinquiry@careismatic.com
Order on CBI Central: cbicentral.com

Need digital assets? Email us at
digitalassets@careismatic.com

SATISFACTION GUARANTEED
www.dickiesmedical.com for more details