



A New Kind of Clean

Cherokee fabric just loves to get fresh. New and improved European Wash Standards mean you can turn up the temp on laundry day and feel extra-polished in your favorite pieces.



The world's #1 medical apparel brand

Cherokee is the brand where it all began. A bold new concept at the time, fashion scrubs that “fit who you are” sparked a revolution many have tried to imitate.

Cherokee Uniforms grew rapidly to become the world's biggest and most popular medical apparel brand, expanding into multiple fabrications and sub-brands. They include Infinity, Workwear Originals, Workwear Revolution, Workwear Revolution Tech, Workwear Core Stretch and Project Lab

Cherokee Uniforms remains our flagship brand, offering unsurpassed selection, quality, innovation, and value.

Front cover: Left Model is wearing Round Neck Top **CKE2624A** in Pewter (PWPS).

Front cover: Right Model is wearing Mock Wrap Top **CKE2625A** in Royal (RYPS).

Right Image: Model is wearing V-neck Top **WWE620** in Ciel (CIE).



CONTENTS

- 05** WORKWEAR ORIGINALS
- 09** WORKWEAR REVOLUTION
- 15** WORKWEAR REVOLUTION TECH
- 17** WORKWEAR CORE STRETCH
- 22** INFINITY
- 26** PROJECT LAB
- 28** WORKWEAR
- 29** FIT GUIDES / SIZE CHARTS
- 31** STYLE INDEX
- 32** COLOUR ABBREVIATIONS
- 33** ORDERING & RETURN POLICY



Classics You Can Count On

Our original scrubs are still as popular as ever. They're strong, stylish, and as dependable as you are.



DURABLE



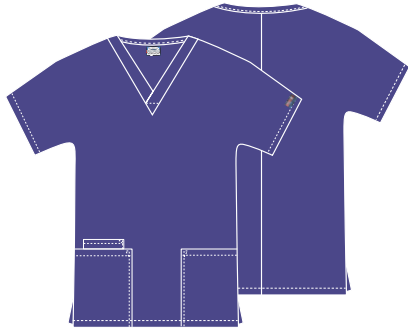
SOIL RELEASE



EASY CARE



Model is wearing **WWE4700**
V-Neck Top in Royal (ROYW).



WWE4700 V-Neck Top

XXS-3XL (67cm)

Fabric
65 Poly/35 Cotton
Poplin w/Soil Release
White: 55 Cotton/
45 Poly Poplin

Care
Industrial Launder

Product Details

- Traditional Classic fit
- Two patch pockets
- Cellphone pocket
- Short dolman sleeves
- Side vents

Available Colours



WWE4770 Snap Front V-Neck Top

XXS-3XL (67cm)

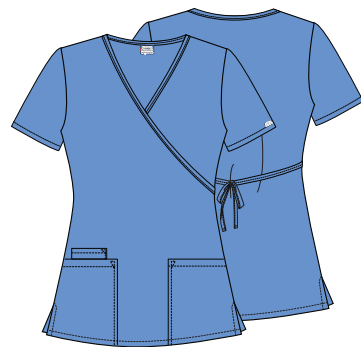
Fabric
65 Poly/35 Cotton
Poplin w/Soil Release
White: 55 Cotton/
45 Poly Poplin
70 degree wash,

Care
Industrial Launder

Product Details

- Traditional Classic fit
- Snap front closure
- Two patch pockets
- Cellphone pocket
- Side vents

Available Colours



WWE4801 Mock Wrap Tunic

XXS-3XL (72cm)

Fabric
65 Poly/35 Cotton
Poplin w/Soil Release

Care
Industrial Launder

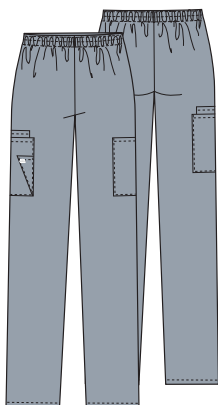
Product Details

- Traditional Classic fit
- Two patch pockets
- Cellphone pocket
- Tie-back detail
- Side vents

Available Colours



WOMEN'S TROUSERS



WWE4200 Natural Rise Pull-on Cargo Trouser

XXS-3XL (76cm)

Fabric
65 Poly/35 Cotton
Poplin w/Soil Release
White: 55 Cotton/
45 Poly Poplin

Care
Industrial Launder

Product Details

- Traditional Classic fit
- Elastic waistband
- Two cargo pockets
- Cellphone pocket
- Scissors pocket
- Tapered leg, 38cm opening

Available Colours



UNISEX STYLES



WWE4876
Unisex V-Neck Top

XXS-3XL (73.5cm)

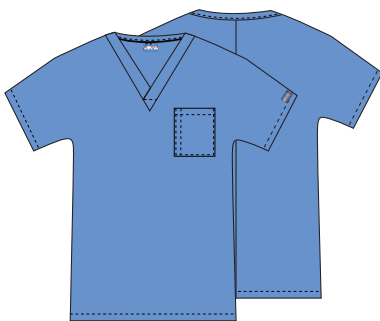
Fabric
65 Poly/35 Cotton
Poplin w/Soil Release
White: 55 Cotton/
45 Poly Poplin

Care
Industrial Laundry
70°

Product Details

- Unisex fit
- Chest pocket
- Two patch pockets
- Side vents

Available Colours



WWE4777
Unisex V-Neck Tunic

XXS-3XL (69.5cm)

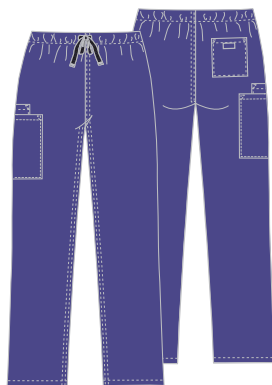
Fabric
65 Poly/35 Cotton
Poplin w/Soil Release

Care
Industrial Laundry
70°

Product Details

- Unisex fit
- Chest pocket with pen slot
- Dolman sleeves

Available Colours



WWE4100
Unisex Drawstring Cargo Trouser

XXS-3XL (78.5cm)

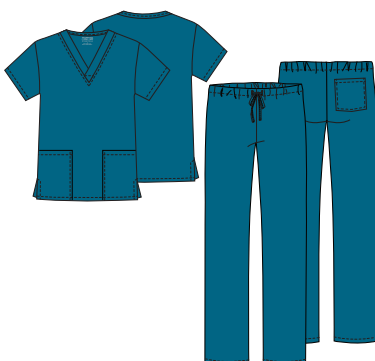
Fabric
65 Poly/35 Cotton
Poplin w/Soil Release
White: 55 Cotton/
45 Poly Poplin

Care
Industrial Laundry
70°

Product Details

- Unisex fit
- Webbed drawstring
- Cargo pocket with inside cellphone pocket
- Back pocket
- Straight leg, 47cm opening

Available Colours



WWE530C
Unisex Top and Trouser Set

XXS-3XL
(Center back length: 72cm
Inseam: 78.5cm)

Fabric
65 Poly/35 Cotton
Poplin w/Soil Release
White: 55 Cotton/
45 Poly Poplin

Care
Industrial Laundry
70°

Product Details

- Unisex fit
- Three pockets: patch pockets, back pocket
- Drawstring waist
- Tapered leg, 45.5cm opening

Available Colours

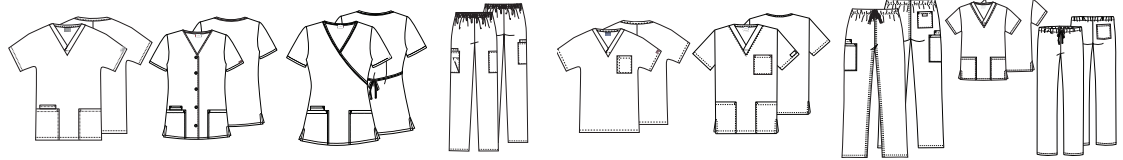


**COLOUR and
STYLE MATRIX**

Colours and styles listed in order of popularity.

Styles and colours featured are reorderable, and are Poly/Cotton Poplin w/Soil Release (White: Cotton/Poly Poplin).

Center back lengths and inseams are listed in parentheses.



WWE4700 V-Neck Top	WWE4770 Snap Front V-Neck Top	WWE4801 Mock Wrap Tunic	WWE4200 Natural Rise Pull-on Cargo Trousers	WWE4777 V-Neck Tunic	WWE4876 V-Neck Top	WWE4100 Drawstring Cargo Trousers	WWE530C Top and Trousers Set
XXS-3XL (67cm)	XXS-3XL (67cm)	XXS-3XL (72cm)	XXS-3XL (76cm)	XXS-3XL (69.5cm)	XXS-3XL (73.5cm)	XXS-3XL (78.5cm)	XXS-3XL (CBL: 72cm Inseam: 78.5cm)

	WOMEN'S STYLES				UNISEX STYLES			
Black (BLKW)								
Navy (NAVW)								
Pewter (PWTW)								
Royal (ROYW)		style not available in this color						
Wine (WINW)		style not available in this color	style not available in this color					
Ciel (CIEW)		style not available in this color						
White (WHTW)			style not available in this color		style not available in this color			
Caribbean Blue (CARW)		style not available in this color	style not available in this color		style not available in this color			
Teal Blue (TLBW)		style not available in this color	style not available in this color		style not available in this color			style not available in this color
Hunter (HUNW)		style not available in this color			style not available in this color			
Galaxy Blue (GABW)		style not available in this color	style not available in this color		style not available in this color	style not available in this color	style not available in this color	style not available in this color
Red (REDW)		style not available in this color	style not available in this color		style not available in this color	style not available in this color	style not available in this color	style not available in this color
Grey (GRYW)		style not available in this color	style not available in this color		style not available in this color	style not available in this color		style not available in this color
Eggplant (EGGW)		style not available in this color	style not available in this color		style not available in this color	style not available in this color		style not available in this color
Grape (GRPW)		style not available in this color	style not available in this color		style not available in this color	style not available in this color		style not available in this color
Khaki (KAKW)		style not available in this color	style not available in this color		style not available in this color	style not available in this color	style not available in this color	style not available in this color
Turquoise (TRQW)		style not available in this color	style not available in this color		style not available in this color	style not available in this color	style not available in this color	style not available in this color
Shocking Pink (SHPW)		style not available in this color	style not available in this color		style not available in this color	style not available in this color	style not available in this color	style not available in this color
Surgical Green (SGRW)		style not available in this color	style not available in this color		style not available in this color	style not available in this color	style not available in this color	style not available in this color



Model is wearing **WW615** Men's Polo Shirt in Pewter (PWT).

ACTIVE STYLING

Work Hard, Look Smart

This mini-collection combines a professional look with high-performance features like contrast mesh panels, which add breathability and ease of movement, so they look and feel great all shift long.



ULTRA SOFT



TWO-WAY STRETCH



EASY CARE

WOMEN'S ACTIVE STYLES



WWE601
V-Neck Top
XXS-3XL (66cm)

Fabric
78 Poly/20 Rayon/
2 Elastane Twill



Product Details

- Modern Classic fit
- Two patch pockets
- Instrument loops in right pocket
- Mesh neckband and panels
- Front and back shoulder yokes
- Front vents
- Shirttail hem
- Reflective label and tape

Available Colours



WWE698
Snap Front Polo Shirt
XXS-3XL (70cm)

Fabric
78 Poly/20 Rayon/
2 Elastane Twill

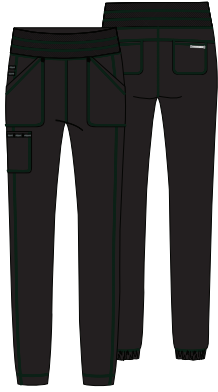


Product Details

- Modern Classic fit
- Snap front closure
- Welt chest pocket
- Mesh side panels
- Reflective label
- Side vents

Available Colours





WWE011 Natural Rise Jogger

XXS-3XL (73.5cm)

Fabric
78 Poly/20 Rayon/
2 Elastane Twill



Product Details

- Modern Classic fit
- Mesh on elasticized waistband
- Five pockets: two front patch pockets, cargo pocket, two back patch pockets
- Instrument loops
- Stylized hem
- Reflective label and tape
- Tapered leg, 28cm opening

Available Colours



MEN'S ACTIVE



WWE615 Men's Polo Shirt

XXS-3XL (72cm)

Fabric
78 Poly/20 Rayon/
2 Elastane Twill



Product Details

- Men's Modern fit
- Chest pocket
- Mesh yoke and panels
- Locker loop
- Reflective label

Available Colours



WWE603 Men's V-Neck Top

XXS-3XL (72cm)

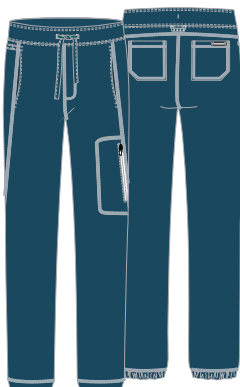
Fabric
78 Poly/20 Rayon/
2 Elastane Twill



Product Details

- Men's fit
- Chest pocket, zip front pocket
- Instrument loop above zip pocket
- Mesh yoke and panels
- Locker loop
- Reflective label and tape

Available Colours



WWE012 Men's Jogger

XXS-3XL (78.5cm)

Fabric
78 Poly/20 Rayon/
2 Elastane Twill



Product Details

- Men's fit
- Elastic waistband with drawstring
- Five pockets: two front slash pockets, side seam zip pocket, two back pockets
- Instrument and locker loops
- Stylized hem
- Reflective label and tape
- Straight leg, 30cm opening

Available Colours



COLOUR and STYLE MATRIX

Colours and styles listed in order of popularity.

Styles and colours featured are reorderable and Poly/Elastane Poplin, unless otherwise noted.

Center back lengths and inseams are listed in parentheses.



WWE601
V-Neck Top

XXS-3XL
(66cm)



WWE698
Snap Front Polo Shirt

XXS-3XL
(70cm)



WWE011
Natural Rise Jogger

XXS-3XL
(73.5cm)



WWE012
Jogger

XXS-3XL
(78.5cm)



WWE615
Polo Shirt

XXS-3XL
(72cm)



WWE603
V-Neck Top

XXS-3XL
(72cm)

	WOMEN'S ACTIVE STYLES			MEN'S ACTIVE STYLES		
--	-----------------------	--	--	---------------------	--	--

BLACK (BAPS)						
NAVY (NAV)						
PEWTER (PWT)						



Next-Level Softness

Slip into our softest, smoothest, most comfortable fabric ever.



ULTRA SOFT



TWO-WAY STRETCH



EASY CARE



Model is wearing: **WWE620** V-Neck Top in Caribbean Blue (CAR)



WWE620
V-Neck Top

XXS-3XL (68.5cm)

Fabric
78 Poly/20 Rayon/
2 Elastane Twill

Care
Industrial Launder



Product Details

- Modern Classic fit
- Three pockets: patch pocket with instrument loop on left, double patch pocket on right
- Logo label with bungee loop
- Back princess seams
- Side vents

Available Colours



WWE610
Mock Wrap Top

XXS-3XL (66cm)

Fabric
78 Poly/20 Rayon/
2 Elastane Twill

Care
Industrial Launder



Product Details

- Modern Classic fit
- Two patch pockets
- Hidden instrument loops
- Logo label with bungee loop
- Front and back princess seams
- Front shoulder yokes
- Side vents

Available Colours



MATERNITY STYLES



WWE688
Maternity Mock Wrap Top

XXS-3XL (68.5cm)

Fabric
78 Poly/20 Rayon/
2 Elastane Twill
60 degree wash

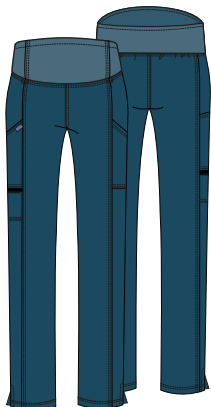
Care
60°

Please order your pre-pregnancy size.

Product Details

- Maternity fit
- Two patch pockets
- Front shoulder yokes
- Front and back princess seams
- Soft knit front panels
- Side zip gussets with mesh insets allow room to grow

Available Colours



WWE155
Maternity Pull-on Trouser

XXS-3XL (76cm)

Fabric
78 Poly/20 Rayon/
2 Elastane Twill

Care
60°

Please order your pre-pregnancy size.

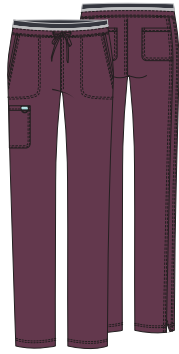
Product Details

- Maternity fit
- Soft knit waistband
- Three pockets: two cargo pockets, zip pocket on right
- Bungee loops at waist
- Side vents
- Slim-straight leg, 38cm opening

Available Colours



WOMEN'S TROUSERS



WWE105
Mid Rise Drawstring Cargo Trouser

XXS-3XL (78.5cm)

Fabric
78 Poly/20 Rayon/
2 Elastane Twill

Care
Industrial Launder



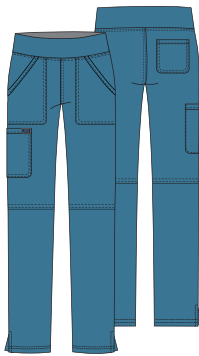
Product Details

- Modern Classic fit
- Five pockets: slash pockets, cargo pocket, back pockets
- Elastic knit waistband
- Logo label with bungee loop
- Tapered leg, 38cm opening

Available Colours



MEN'S STYLES



WWE110
Mid Rise Pull-on Cargo Trouser

XXS-3XL (78.5cm)

Fabric
78 Poly/20 Rayon/
2 Elastane Twill

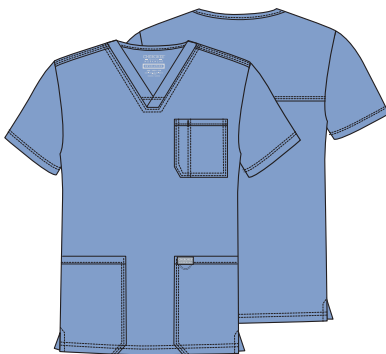
Care
Industrial Launder



Product Details

- Modern Classic fit
- Elastic-reinforced knit waistband
- Four pockets: front patch pockets, cargo pocket and back pocket
- Logo label with bungee loop
- Side vents
- Straight leg, 45.5cm opening

Available Colours



WWE670
Men's V-Neck Top

XXS-3XL (73.5cm)

Fabric
78 Poly/20 Rayon/
2 Elastane Twill

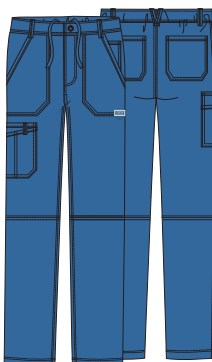
Care
Industrial Launder



Product Details

- Men's fit
- Chest pocket with pencil stitch
- Two patch pockets
- Logo label with bungee loop
- Back yoke
- Side vents

Available Colours



WWE140
Men's Fly Front Cargo Trouser

XXS-3XL (81cm)

Fabric
78 Poly/20 Rayon/
2 Elastane Twill

Care
Industrial Launder



Product Details

- Men's fit
- Back elastic waistband with inside drawstring
- Zip fly with button closure
- Five belt loops
- Seven pockets: double cargo pocket, patch pockets, back pockets, accessory pocket
- Logo label with bungee loop
- Tapered leg, 48cm opening

Available Colours





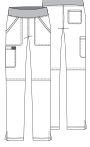
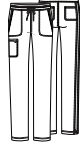

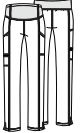


**COLOUR and
STYLE MATRIX**

Colours and styles listed
in order of popularity.

Styles and colours featured
are reorderable and Poly/
Rayon/Elastane Twill, unless
otherwise noted.

Center back lengths and inseams
are listed in parentheses.

							
WWE140 Fly Front Cargo Trouser	WWE670 V-Neck Top	WWE610 Mock Wrap Top	WWEW620 V-Neck Top	WWE110 Mid Rise Pull-on Cargo Trouser	WWE105 Mid Rise Drawstring Cargo Trouser	WWE688 Maternity Mock Wrap Top	WWE155 Maternity Pull-on Trouser
XXS-3XL (81cm)	XXS-3XL (73.5cm)	XXS-3XL (66cm)	XXS-3XL (68.5cm)	XXS-3XL (78.5cm)	XXS-3XL (78.5cm)	XXS-3XL (68.5cm)	XXS-3XL (76cm)

	MEN'S STYLES		WOMEN'S STYLES				MATERNITY	
Black (BLK)								
Navy (NAV)								
Pewter (PWT)								
Royal (ROY)						style not available in this color	style not available in this color	style not available in this color
Wine (WIN)	style not available in this color	style not available in this color					style not available in this color	style not available in this color
Caribbean Blue (CAR)							style not available in this color	style not available in this color
Ciel Blue (CIE)						style not available in this color	style not available in this color	style not available in this color
Teal Blue (TLB)	style not available in this color	style not available in this color		style not available in this color		style not available in this color	style not available in this color	style not available in this color
Hunter (HUN)	style not available in this color	style not available in this color	style not available in this color	style not available in this color	style not available in this color	style not available in this color	style not available in this color	style not available in this color
White (WHT)							style not available in this color	style not available in this color
Eggplant (EGG)	style not available in this color	style not available in this color	style not available in this color	style not available in this color	style not available in this color	style not available in this color	style not available in this color	style not available in this color
Electric Pink (EPEI)	style not available in this color	style not available in this color		style not available in this color		style not available in this color	style not available in this color	style not available in this color
Turquoise (TRQ)	style not available in this color	style not available in this color		style not available in this color		style not available in this color	style not available in this color	style not available in this color

Fresh Looks All Shift Long

Our most popular scrubs, enhanced with spill- and stain-resistant Certainty Protective Technologies.™



ULTRA
SOFT



CERTAINTY®
TECHNOLOGIES



TWO-WAY
STRETCH



WWE507AB
Scrub Hat



WWE770AB V-Neck Top

XXS-3XL (66cm)

Fabric
78 Poly/20 Rayon/
2 Elastane Twill

Care
60'

Product Details

- Modern Classic fit
- Rib-knit at neckline
- Three pockets: two patch pockets, utility pocket with pen slot on right
- Rib-knit back side panels
- Side vents

Available Colours



WWE775AB Mock Wrap Top

XXS-3XL (66cm)

Fabric
78 Poly/20 Rayon/
2 Elastane Twill

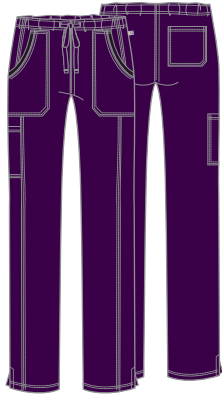
Care
60'

Product Details

- Modern Classic fit
- Two patch pockets
- Instrument loops, pen slot
- Rib-knit back panels
- Side vents

Available Colours





WWE235AB
Mid Rise Drawstring Trousers

XXS-3XL (78.5cm)

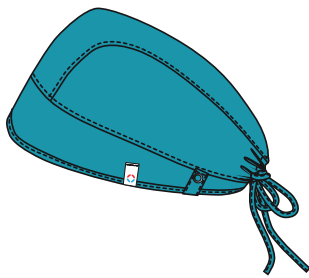
Fabric
 78 Poly/20 Rayon/
 2 Elastane Twill

Care

Product Details

- Modern Classic fit
- Four pockets: patch pockets, cargo pocket, back pocket
- Rib-knit trim at pockets
- Side vents
- Straight leg, 42.5cm opening

Available Colours



WWE507AB
Scrubs Hat

OS

Fabric
 78 Poly/20 Rayon/
 2 Elastane Twill

Care

Product Details

- Unisex fit
- Snap tabs by ears to hold face mask (sold separately) in place
- Contoured seaming
- Interior terry-cloth sweat and
- Back elastic and adjustable tie for secure fit

Available Colours



COLOUR and STYLE MATRIX

Colours and styles listed in order of popularity.

Styles and colours featured are reorderable and Poly/Rayon/Elastane Twill.

Center back lengths and inseams are listed in parentheses.



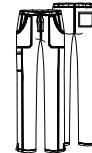
WWE770AB
 V-Neck Top

XXS-3XL (66cm)



WWE775AB
 Mock Wrap Top

XXS-3XL (66cm)



WWE235AB/P/T
 Mid Rise Drawstring Trousers

XXS-3XL (78.5cm)



WWE507AB
 Scrubs Hat

OS

	WOMEN'S STYLES			UNISEX STYLE
Black (BLK)				
Navy (NAV)				
Pewter (PWT)				
White (WHT)				style not available in this color
Royal (ROY)				
Ciel Blue (CIE)				
Wine (WIN)				
Teal Blue (TLB)	style not available in this color	style not available in this color	style not available in this color	



Stretch Your Comfort Zone

Soft, sportswear-inspired fabric that stretches two ways for flattering fit and comfort at every move.



DURABLE



EXTRA SOFT



TWO-WAY STRETCH



Model is wearing: **WWE4727** V-Neck Top in Ciel Blue (CIEW)

WOMEN'S STYLES



WWE4727
V-Neck Top

XXS-3XL (68.5cm)

Fabric
55 Cotton/42 Poly/
3 Elastane Twill



Product Details

- Modern Classic fit
- Crossover front yoke
- Two patch pockets
- Right sectional pocket with ID loop
- Back yoke and princess seams
- Side vents

Available Colours



WWE4728
Mock Wrap Top

XXS-3XL (68.5cm)

Fabric
55 Cotton/42 Poly/
3 Elastane Twill



Product Details

- Modern Classic fit
- Two patch pockets
- Right sectional pocket with ID loop
- Instrument loops
- Front and back princess seams
- Double-needle topstitching
- Side vents

Available Colours





WWE4710
V-Neck Top

XXS-3XL (66cm)

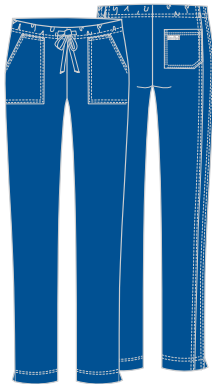
Fabric
55 Cotton/42 Poly/
3 Elastane Twill



Product Details

- Modern Classic fit
- Two patch pockets
- Interior and back pockets
- Front shoulder yokes with ID badge slot
- Stethoscope loop and pen slot
- Princess seams
- Double-needle topstitching
- Side vents

Available Colours



WWE4203
Mid Rise Drawstring Trouser

XXS-3XL (78.5cm)

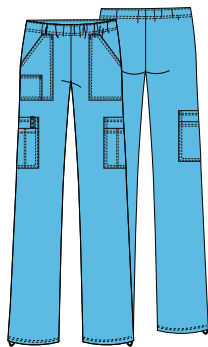
Fabric
55 Cotton/42 Poly/
3 Elastane Twill



Product Details

- Modern Classic fit
- Elastic waistband with drawstring
- Patch pockets, back pocket
- Slim straight leg, 40.5cm opening

Available Colours



WWE4005
Mid Rise Pull-on Cargo Trouser

XXS-3XL (78.5cm)

Fabric
55 Cotton/42 Poly/
3 Elastane Twill



Product Details

- Modern Classic fit
- Elastic waistband
- Seven pockets: front patch pockets, small right patch pocket, double cargo pockets
- ID loop on right cargo pocket
- Adjustable bungee at leg opening
- Straight leg, 49.5cm opening

Available Colours



UNISEX STYLES



WWE4725
Unisex V-Neck Top

XXS-3XL (71cm)

Fabric
55 Cotton/42 Poly/
3 Elastane Twill

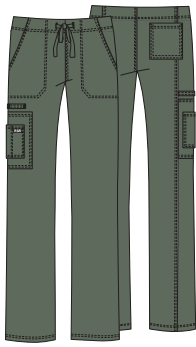


Product Details

- Unisex fit
- Chest pocket with instrument holder
- Two patch pockets
- Cellphone/instrument pocket
- Back yoke
- Side vents

Available Colours





WWE4043

Unisex Drawstring Cargo Trouser

XXS-3XL (78.5cm)

Fabric
55 Cotton/42 Poly/
3 Elastane Twill

Care
60°

Product Details

- Unisex fit
- Elastic waistband with drawstring
- Five pockets: slash pockets, cargo pocket, cellphone pocket, back pocket
- Instrument loops
- Straight leg, 52.0cm opening

Available Colours



MEN'S STYLES



WWE4743

Men's V-Neck Top

XXS-3XL (73.5cm)

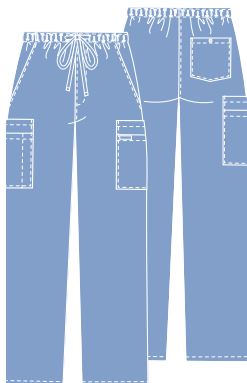
Fabric
55 Cotton/42 Poly/
3 Elastane Twill

Care
60°

Product Details

- Men's fit
- Double chest pocket with pen slot
- Back yoke
- Double-needle topstitching
- Side vents

Available Colours



WWE4243

Men's Fly Front Cargo Trouser

XXS-3XL (78.5cm)

Fabric
55 Cotton/42 Poly/
3 Elastane Twill

Care
60°

Product Details

- Men's fit
- Elastic waistband with drawstring
- Zip fly front closure
- Seven pockets: slash pockets, double cargo pockets, back pocket with button closure
- Tapered leg, 45.5cm opening

Available Colours



**COLOUR and
STYLE MATRIX**

Colours and styles listed in order of popularity.

Styles and colours featured are reorderable unless otherwise noted and are Cotton/Poly/Elastane Twill.

Center back lengths and inseams are listed in parentheses.



WWE4728
Mock Wrap
Top

XXS-3XL
(68.5cm)



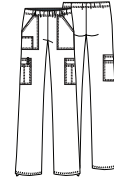
WWE4710
V-Neck
Top

XXS-3XL
(66cm)



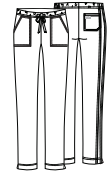
WWE4727
V-Neck
Top

XXS-3XL
(68.5cm)



WWE4005
Mid Rise Pull-on
Cargo Trousers

XXS-3XL
(78.5cm)



WWE4203
Mid Rise
Drawstring Trousers

XXS-3XL
(78.5cm)

	WOMEN'S TOPS			WOMEN'S TROUSERS	
--	--------------	--	--	------------------	--

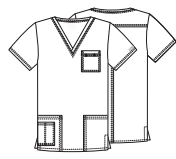
Black (BLKW)					
Navy (NAVW)					
Pewter (PWTW)					
Ciel (CIEW)					
Royal (ROYW)					
Wine (WINW)					
Caribbean Blue (CARW)					
White (WHTW)					
Teal Blue (TLBW)					
Hunter (HUNW)					
Turquoise (TRQW)		style not available in this color	style not available in this color		style not available in this color
Shocking Pink (SHPW)		style not available in this color	style not available in this color		style not available in this color

**COLOUR and
STYLE MATRIX**

Colours and styles listed in order of popularity.

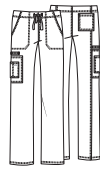
Styles and colours featured are reorderable unless otherwise noted and are Cotton/Poly/Elastane Twill.

Center back lengths and inseams are listed in parentheses.



WWE4725
V-Neck
Top

XXS-3XL
(71cm)



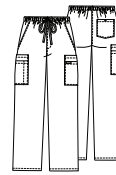
WWE4043
Drawstring
Cargo Trousers

XXS-3XL
(78.5cm)



WWE4743
V-Neck
Top

XXS-3XL
(73.5cm)



WWE4243
Fly Front Cargo
Trousers

XXS-3XL
(78.5cm)

	UNISEX STYLES		MEN'S STYLES	
Black (BLKW)				
Navy (NAVW)				
Pewter (PWTW)				
Ciel (CIEW)			style not available in this color	
Royal (ROYW)			style not available in this color	
Wine (WINW)			style not available in this color	style not available in this color
Caribbean Blue (CARW)				
White (WHTW)			style not available in this color	
Teal Blue (TLBW)			style not available in this color	style not available in this color
Hunter (HUNW)			style not available in this color	style not available in this color

Infinity

by CHEROKEE®
UNIFORMS

Moving Forward

Infinity innovates with brand-new styles, including a scrubs cardigan, and great new options for Women and Men.



FOUR-WAY STRETCH



CERTAINTY® TECHNOLOGIES



MOISTURE WICKING

For extra protection, Certainty® antimicrobial fabric technology has been added to all Infinity garments. Wash all items thoroughly after each use. Items featuring antimicrobial technology do not protect users or others against bacteria, viruses, or disease organisms. Always follow all best practices for infection prevention. Visit CertaintyTechnologies.com for details.



Model is wearing: **CKE2625A**
Mock Wrap Top in Teal Blue (TLPS)

WOMEN'S TOPS



CKE2625A Mock Wrap Top

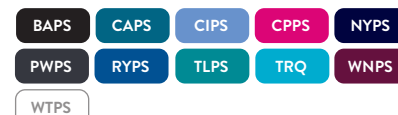
XXS-3XL (66cm)

Fabric
95 Poly/
5 Elastane Poplin

Care
60°

Product Details

- Contemporary fit
- Four pockets: interior pocket, instrument pocket, and set-in front pockets
- Logo O-ring
- Princess seams
- Rib-knit back panel
- Side vents

Available Colours

CKE2624A Round Neck Top

XXS-3XL (66cm)

Fabric
95 Poly/
5 Elastane Poplin

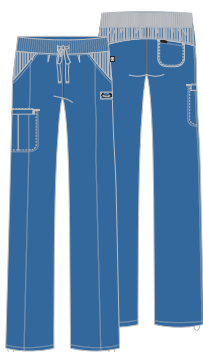
Care
60°

Product Details

- Contemporary fit
- Three pockets: two patch pockets, interior pocket
- Rib-knit inset at front neckband and back panel
- Shoulder yokes
- Bungee ID badge loop
- Side vents

Available Colours

WOMEN'S TROUSERS



CKE1123A Drawstring Trouser

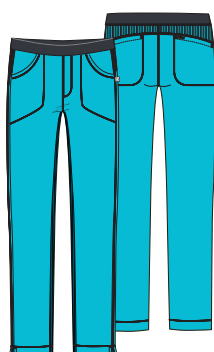
XXS-3XL (78.5cm)

Fabric
95 Poly/
5 Elastane Poplin

Care
60°

Product Details

- Contemporary fit
- Four pockets: slash pockets, cargo pocket, back pocket
- Elastic-reinforced rib-knit waistband with drawstring
- Adjustable toggle hems
- Rib-knit front and back yokes
- Straight leg, 45.5cm opening

Available Colours

CKE1124A Slim Pull-on Trouser

XXS-3XL (78.5cm)

Fabric
95 Poly/
5 Elastane Poplin

Care
60°

Product Details

- Contemporary fit
- Lower rise
- Patch and back pockets
- Elastic waistband
- Rib-knit back yoke and in-seam inset
- Coverstitch detail
- Side vents
- Slim straight leg, 43cm opening

Available Colours



Model is wearing: **CKE900A**
Men's V-Neck top in
Wine (WNPS)

MEN'S STYLES



CKE900A
Men's V-Neck Top

XXS-3XL (75cm)

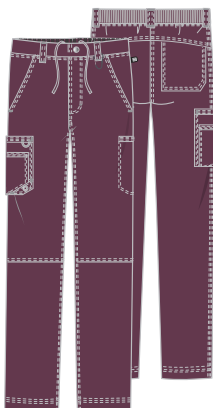
Fabric
95 Poly/
5 Elastane Poplin Knit

Care
60°

Product Details

- Men's fit
- Three pockets: welt pockets, chest pocket with grommet detail
- Rib-knit back side panels
- Front and back yokes

Available Colours



CKE200A
Men's Fly Front Cargo Trouser

XXS-3XL (81cm)

Fabric
95 Poly/
5 Elastane Poplin

Care
60°

Product Details

- Men's fit
- Back rib-knit elastic waistband
- Zip fly with button closure and inside drawstring
- Six pockets: front slash pockets, welt cargo pocket on left, layered cargo pocket with bungee and grommet on right, back patch pocket
- Knee seams
- Five belt loops
- Tapered leg, 45.5cm opening

Available Colours



**COLOUR and
STYLE MATRIX**

Colours and styles listed in order of popularity.

Styles and colours featured are reorderable and Poly/Elastane Poplin, unless otherwise noted.

Center back lengths and inseams are listed in parentheses.

CKE2624A Round Neck Top	CKE2625A Mock Wrap Top	CKE1123A Drawstring Trouser	CKE1124A Slim Pull-on Trouser	CKE900A V-Neck Top	CKE200A Fly Front Cargo Trouser
XXS-3XL (66cm)	XXS-3XL (66cm)	XXS-3XL (78.5cm)	XXS-3XL (78.5cm)	XXS-3XL (75cm)	XXS-3XL (81cm)

	WOMEN'S TOPS		WOMEN'S TROUSERS		MEN'S STYLES	
Black (BAPS)						
Navy (NYPS)					style not available in this color	style not available in this color
Pewter (PWPS)						
Royal (RYPS)					style not available in this color	style not available in this color
White (WTPS)					style not available in this color	style not available in this color
Wine (WNPS)						
Caribbean Blue (CAPS)						
Ciel (CIPS)	style not available in this color				style not available in this color	style not available in this color
Teal Blue (TLPS)					style not available in this color	style not available in this color
Carmine Pink (CPPS)	style not available in this color		style not available in this color		style not available in this color	style not available in this color
Turquoise (TRQ)	style not available in this color		style not available in this color		style not available in this color	style not available in this color



For extra protection, Certainty® antimicrobial fabric technology has been added to all Infinity garments. Visit CertaintyTechnologies.com for details.



**CKE452
Women's 83.5cm Lab Coat**

XXS-3XL (83.5cm)

Fabric

65 Poly/35 Cotton
Built-in Stretch Twill

Care

Product Details

- Modern Classic fit
- Three pockets: chest pocket with instrument loop, two front tablet pockets
- Front and back princess seams
- Back shoulder yokes
- Locker loop

Available Colour

WHT



Model is wearing: **CKE452**
Women's 83.82 Lab Coat
in White (WHT)

WOMEN'S STYLES



**CKE451
Women's 71cm Consultation Coat**

XXS-3XL (71cm)

Fabric

65 Poly/35 Cotton
Built-in Stretch Twill

Care



Product Details

- Modern Classic fit
- Three pockets: chest pocket, two front tablet pockets
- Back princess seams

Available Colour

WHT



**CKE421
Women's 94cm Lab Coat**

XXS-3XL (94cm)

Fabric

65 Poly/35 Cotton
Built-in Stretch Twill

Care



Product Details

- Modern Classic fit
- Three pockets: chest pocket, two front tablet pockets
- Side access slits
- Front and back yokes
- Bungee ID badge loop
- Back princess seams
- Locker loop

Available Colour

WHT

MEN'S STYLES



CKE401
Men's 72cm Consultation Coat

XXS-3XL (76cm)

Fabric
65 Poly/35 Cotton
Built-in Stretch Twill

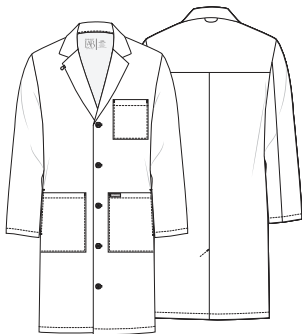
Care
40°

Product Details

- Men's fit
- Three pockets: chest pocket, two front tablet pockets
- Back yoke and center back seam

Available Colour

WHT



CKE412
Men's 96.5cm Lab Coat

XXS-3XL (96.5cm)

Fabric
65 Poly/35 Cotton
Built-in Stretch Twill

Care
40°

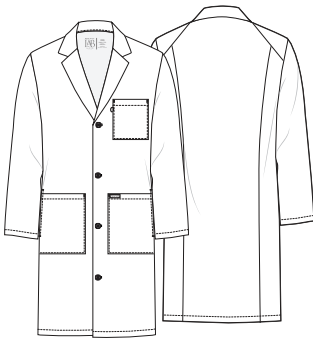
Product Details

- Men's fit
- Three pockets: chest pocket, two front tablet pockets
- Side access slits
- Bungee ID badge loop
- Locker loop
- Back yoke
- Back kick pleat

Available Colour

WHT

UNISEX STYLES



CKE460
Unisex 96.5cm Lab Coat

XXS-3XL (96.5cm)

Fabric
65 Poly/35 Cotton
Built-in Stretch Twill

Care
40°

Product Details

- Unisex fit
- Three pockets: chest pocket, two front tablet pockets
- Side access slits
- Bungee ID badge loop

Available Colour

WHT

COLOUR and STYLE MATRIX

Styles and colours featured are reorderable and Poly/Cotton Built-in Stretch Twill.

Center back lengths are listed in parentheses.



CKE451
Lab Coat

XXS-3XL (71cm)



CKE452
Lab Coat

XXS-3XL (83.5cm)



CKE421
Lab Coat

XXS-3XL (94cm)



CKE401
Lab Coat

XXS-3XL (76cm)



CKE412
Lab Coat

XXS-3XL (96.5cm)



CKE460
Lab Coat

XXS-3XL (96.5cm)

WOMEN'S STYLES

MEN'S STYLES

UNISEX

White (WHT)





WWE4439 Women's 83.5cm Lab Coat

XS-3XL (83.5cm)

Fabric
51 Poly/46 Rayon/
3 Elastane Twill

Care
30°

Product Details

- Modern classic fit
- Patch pockets
- Button front closure
- Heat transfer logo
- Instrument loop

Available Colour

WHTV



WWE4403 96.5cm Unisex Lab Coat

XS-3XL (96.5cm)

Fabric
51 Poly/46 Rayon/
3 Elastane Twill

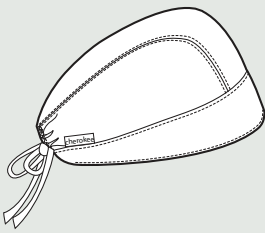
Care
30°

Product Details

- Unisex modern fit
- Three pockets: patch pockets, chest pocket
- Button front closure
- Side access slits
- Heat transfer logo

Available Colour

WHTV



2506 Solid Scrubs Hat

OS

Fabric
65 Poly/35 Cotton
Poplin w/Soil
Release

Care
60°

Product Details

- Unisex fit
- Contoured seaming
- Interior terry cloth sweatband
- Back elastic and adjustable tie

Available Colours



FIT GUIDES

WOMEN'S MEASURING GUIDE



BUST
WAIST
HIPS
INSEAM

Measure under the arms around the fullest part of the bust/chest.
Measure under the natural waistline, loosely holding the tape measure.
Standing with feet together, measure around the fullest part of the hips.
Measure along the inside of the leg, from just below the crotch to 1" below the ankle.

MEN'S MEASURING GUIDE



CHEST
WAIST
HIPS
INSEAM

WOMEN'S FIT GUIDE

TRADITIONAL CLASSIC FIT	MODERN CLASSIC FIT	CONTEMPORARY FIT
Cut for maximum comfort	Contours the body with ease	Contoured to your curves
Rises and leg shapes vary by style	Rises and leg shapes vary by style	Rises and leg shapes vary by style

TROUSER WAIST FIT GUIDE

NATURAL	MID RISE	LOW RISE
At the waist or slightly above	Slightly below the waist	Below the waist

TROUSER LEG FIT GUIDE

STRAIGHT	MODERATE FLARE BOOT CUT	FLARE
Falls straight from the knee to leg opening	Widens slightly from the knee to leg opening	Flares from the knee to leg opening

FIT GUIDES

All measurements are in centimeters.

Use this chart to determine your size. If one of your measurements is between two sizes, order the smaller size for a tighter fit or the larger size for a looser fit. If your measurements for hips and waist correspond to two different suggested sizes, order the one indicated by your hip measurement. All measurements are in centimeters.

Women's Traditional Classic Fit/Maternity Fit

	XXS 2	XS 4-6	S 8-10	M 12-14	L 16-18	XL 20-22	2XL 24-26	3XL 28-30
Bust	86.5-89	91.5-94	96.5-99	101.5-106.5	109-114.5	117-122	124.5-132	135-142
Waist	63.5-66	68.5-71	73.5-76	78.5-84	86.5-91.5	94-99	102-109	112-119
Hips	86.5-89	91.5-94	96.5-99	101.5-106.5	109-114.5	117-122	124.5-132	135-142
Inseam	Regular: 76-79							

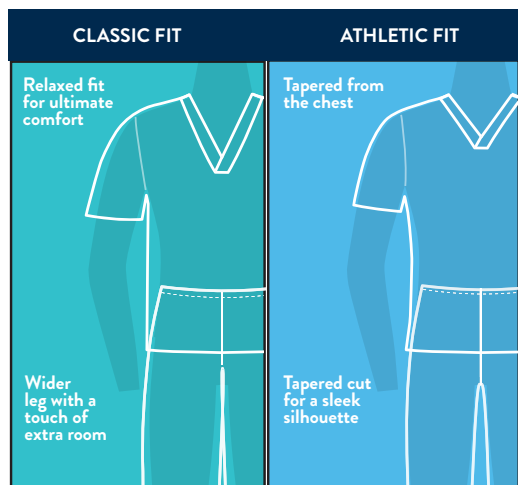
Women's Modern Classic Fit

	XXS 0	XS 2-4	S 6-8	M 10-12	L 14-16	XL 18-20	2XL 22-24	3XL 26-28
Bust	84-86.5	89-91.5	94-96.5	99-104	107-112	114.5-119.5	122-129.5	132-140
Waist	63.5-66	68.5-71	74-76	79-84	86.5-91.5	94-99	101.5-109	112-119.5
Hips	86.5-89	91.5-94	96.5-99	101.5-106.5	109-114.5	117-122	124.5-132	134.5-142
Inseam	Regular: 76-79							

Women's Contemporary Fit

	XXS 0	XS 2-4	S 6-8	M 10-12	L 14-16	XL 18-20	2XL 22-24	3XL 26-28
Bust	81.5-84	86.5-89	91.5-94	96.5-101.5	104-109	112-117	119-127	129.5-137
Waist	61-63.5	66-68.5	71-73.5	76-81.5	84-91.5	94-99	101.5-109	112-119.5
Hips	84-86.5	89-91.5	94-96.5	99-104	107-112	114.5-119.5	122-129.5	132-140
Inseam	Regular: 76-79							

MEN'S FIT GUIDE



Men's Traditional Fit

	XS	S	M	L	XL	2XL	3XL
Chest	89-98	96.5-105.5	104-109	112-119	122-129.5	132-140	142-150
Waist	71-76	78.5-84	86.5-91.5	94-101.5	104-112	114.5-122	124.5-132
Hips	86.5-91.5	94-99	101.5-107	109-117	119.5-127	129.5-137	140-147.5
Inseam	Regular: 76-79						

Men's Modern Fit

	XS	S	M	L	XL	2XL	3XL
Chest	84-89	91.5-96.5	99-104	107-114.5	117-124.5	127-134.5	137-145
Waist	66-71	74-79	81.5-86.5	89-96.5	99-104	107-114.5	117-124.5
Hips	81.5-86.5	89-94	96.5-101.5	104-112	114.5-122	124.5-132	134.5-142
Inseam	Regular: 76-79						

Unisex Traditional Fit

	XXS	XS	S	M	L	XL	2XL	3XL
Chest	81.5-84	86.5-89	91.5-94	96.5-101.5	104-109	112-117	119-127	129.5-137
Waist	63.5-68.5	71-76	78.5-84	86.5-91.5	94-101.5	104-112	114.5-122	124.5-132
Hips	81.5-86.5	89-94	96.5-101.5	104-109	112-119.5	122-129.5	132-140	142-150
Inseam	Regular: 76-79							

Unisex Modern Fit

	XXS	XS	S	M	L	XL	2XL	3XL
Chest	76-81.5	84-89	91.5-96.5	99-104	107-114.5	117-124.5	127-134.5	137-145
Waist	58.5-63.5	66-71	73.5-78.5	81.5-86.5	89-96.5	99-104	106.5-114.5	117-124.5
Hips	76-81.5	84-89	91.5-96.5	99-104	107-114.5	117-124.5	127-134.5	137-145
Inseam	Regular: 76-79							

STYLE #	PAGE(S)	STYLE #	PAGE(S)	STYLE #	PAGE(S)
2506	36	WWE140	13	WWE4100	7
CKE1123A	23	WWE155	12	WWE4200	6
CKE1124A	23	WWE235AB	16	WWE4203	18
CKE200A	24	WWE507AB	15, 16	WWE4243	19
CKE401	27	WWE530C	7	WWE4439	36
CKE412	27	WWE601	9	WWE4439	36
CKE421	26	WWE603	10	WWE4700	5, 6
CKE451	26	WWE610	12	WWE4710	18
CKE452	26	WWE615	9, 10	WWE4725	18
CKE460	27	WWE620	2, 11, 12	WWE4727	17
CKE900A	24	WWE670	13	WWE4728	17
CKE2624A	2, 23	WWE688	12	WWE4743	19
CKE2625A	2, 22, 23	WWE698	9	WWE4770	6
WWE011	10	WWE770AB	15	WWE4777	7
WWE012	10	WWE775AB	15	WWE4801	6
WWE105	13	WWE4005	18	WWE4876	7
WWE110	13	WWE4043	19		



Certainty Protective Technologies™

Certainty Protective Technologies™ are integrated into many of our products to help them better withstand the demands of the clinical environment. Each Certainty® technology adds one or more levels of enhanced protection to increase durability, improve comfort and/or protect the item against fluids and/or bacteria. Items with Certainty® carry the Certainty logo along with a letter symbol indicating the type(s) of Certainty® protection it offers.

Antimicrobial Agents

Proven to reduce bacteria that cause odors and damage the item.

Fluid Barrier

Fluids and stains bead up and roll off the item.

and letter designation indicates garments with one or more Certainty Protective Technologies™ (A = Antimicrobial and B = Fluid Barrier). Wash all garments thoroughly after each use. Garments featuring antimicrobial technology do not protect users or others against bacteria, viruses or other disease organisms. Always follow all best practices for infection prevention.



Inhibits the growth of microbes that cause odor and fabric damage.



Instead of soaking through, fluids bead up and roll off the fabric.

COLOUR ABBREVIATIONS

COLOUR NAME	COLOUR	ABBREVIATION(S)
Black		BAPS, BLK, BLKW
Caribbean (Blue)		CAPS, CAR, CARW
Carmine Pink		CPPS
Ciel (Blue)		CIE, CIEW, CIPS
Electric Pink		EEPI
Eggplant		EGG, EGGW
Galaxy Blue		GABW
Grape		GRPW
Grey		GRYW
Hunter (Green)		HUN, HUNW
Khaki		KAKW
Navy		NAV, NAVW, NYPS
Pewter		PWPS, PWT, PWTW
Red		REDW
Royal		ROY, ROYW, RYPS
Shocking Pink		SHPW
Surgical Green		SGRW
Teal (Blue)		TLB, TLBW, TLPS
Turquoise		TRQ, TRQW
White		WHT, WHTW, WHTV, WTPS
Wine		WIN, WINW, WNPS



Careismatic.com

ORDERING INFORMATION

ONLINE

cbicentral.com

CUSTOMER CARE

800.283.7272

M – F, 6 am to 4 pm PST

Fax: 888.283.7271

Email: orderinginquiry@careismatic.com

(Subject line: Order)

RETURN POLICY

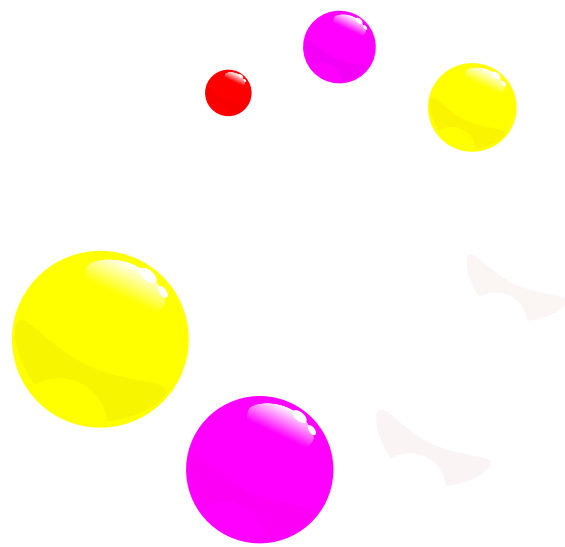
Careismatic Brands (formerly Strategic Partners, Inc.) is fully committed to providing quality products and service. Products with quality issues may be returned within one year of the invoice date. The following guidelines will help expedite the process and will ensure that the proper credit is applied to your account.

Return Policy Guidelines:

- A Return Authorization (RA) Number is required for returned merchandise.
- Contact Customer Care at 800.283.7272 for an RA Number, which will be issued by email or fax.
- Be prepared to provide the corresponding invoice number for the merchandise being returned.
- We will not accept or give credit for returns of unauthorized merchandise.
- We reserve the right to deny credit for damaged garments due to misuse, abuse, alteration or excessive wear.

Transshipping:

- Transshipping (shipping, drop-shipping or forwarding merchandise for resale to any location) requires written consent.



Careismatic Brands, Inc. (CBI) is a leading global

designer, manufacturer and distributor of high-quality,

functional and fashion-forward uniforms.

From Corporate Uniforms, Slip Resistant Footwear,

Personal Protection Equipment programs

to Medical Apparel, Adaptive Clothing, School

Uniforms, Well-being and Skincare products.

CBI delivers innovative, best-in-class products

and solutions to millions of consumers worldwide.

We operate with purpose, integrity and consistently

deliver unparalleled service to our partners.

CAREISMATIC BRANDS
NL B.V. Apollolaan 151,
1077AR Amsterdam, Netherlands

CherokeeUniforms.com



[@cherokeeuniforms](https://www.instagram.com/cherokeeuniforms)

8040/JAN22